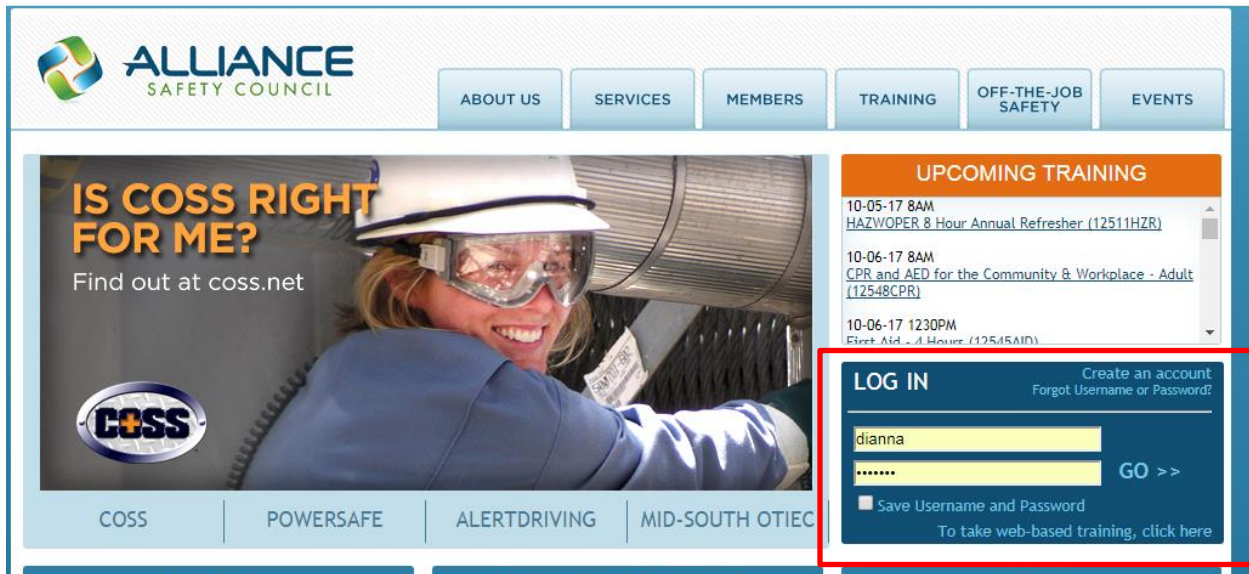
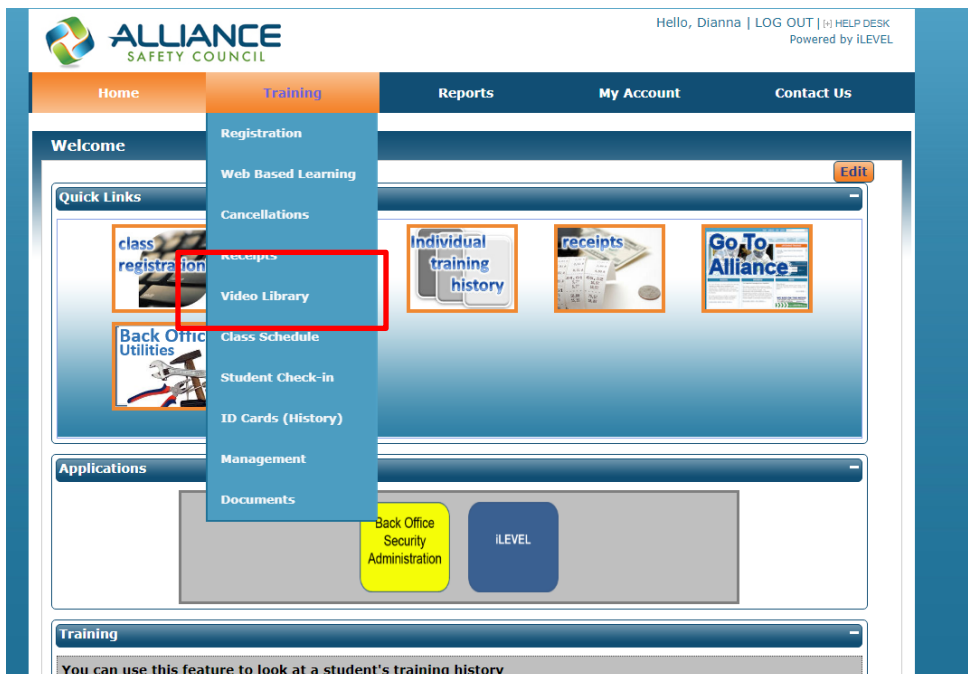


Online Video Library Tutorial

Visit www.alliancesafetycouncil.org. Log in with your Alliance Safety Council username and password. If you do not have an account, you can create one on this page by clicking “Create an Account”.



Once logged in, hover over the **TRAINING TAB** and select **VIDEO LIBRARY** from the drop down menu.



When you select video library, you will be redirected to another website. If you have a username and password, enter that information. If not, complete the form on the right-hand side of the page and click “register.”



Training Network Now Login & Registration

User name: Please enter a user name

Password:

Log In

Forgotten password

First Name

Last Name

Email

Password

Password strength:

Register

After entering your credentials, you will see an option at the top of the page to **BROWSE TOPICS**.



Click **BROWSE TOPICS**. You will then see several topics to choose from. When you click a topic, you will see subtopics.

Main Topics

Browse Topics ✕

- Construction Safety >
- Human Resources >
- OSHA Compliance >
- Safety Awareness >
- School Safety >
- Specific Industries >
- Transportation Safety >
- Workplace Safety >

Subtopics

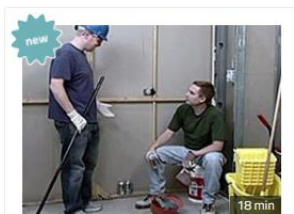
Browse Topics ✕

Construction Safety ▾

- View All Categories
- Alcohol & Drugs
- Back Safety
- Confined Spaces
- Construction Safety Orientation
- Crane Safety
- Electrical Safety

Click a subtopic to see a list of all available videos that pertain to that topic. Select the video you want to watch and click play. Enjoy!

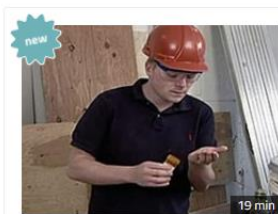
Alcohol & Drugs



Dealing with Drug & Alcohol Abuse for Employees in Construction Environments

In the United States there are over 50 million binge drinkers, 17 million illegal drug users and almost 15 million people who abuse prescription drugs. Substance abuse directly affects a - [Read more >](#)

2017 / 18 min / SKU: 3494



Dealing with Drug & Alcohol Abuse for Managers and Supervisors in Construction Environments

Most substance abusers have jobs. In fact, it is estimated that one out of every ten employees has a drug or alcohol problem. A construction worker's behavior when under the influence can - [Read more >](#)

2017 / 19 min / SKU: 3495



Dealing with Drug and Alcohol Abuse for Employees in Construction Environments

Substance abuse is a huge, worldwide problem, and can be particularly acute in the construction industry. In the United States alone there are over 50 million binge drinkers, 17 million illegal - [Read more >](#)

2011 / 17 min / SKU: 2887 + 2887-S



Dealing with Drug and Alcohol Abuse for Managers and Supervisors in Construction Environments

Construction supervisors need to respect a worker's private life however, what if a worker had too much to drink one night? Or another worker smoked some dope over a weekend? How about the - [Read more >](#)

2011 / 19 min / SKU: 2888